

**TOPRISE**®天瑞  
Skylight & Ventilation Solutions

[www.toprise.com.cn](http://www.toprise.com.cn)

TOPRISE ENERGY SAVING TECHNOLOGY (TAICANG) CO., LTD  
TOPRISE GREEN BUILDING TECHNOLOGY (SHANGHAI) CO., LTD  
Room 1508, Tower A4, No. 78, No. 1688, North Guoquan Road, Shanghai  
Tel: +86 136 8169 2579 Email: [joycewang@toprise.com.cn](mailto:joycewang@toprise.com.cn)



**TOPRISE**®  
**Roof Ventilator**  
[www.toprise.com.cn](http://www.toprise.com.cn)

**TOPRISE**®天瑞  
Skylight & Ventilation Solutions



Natural Way for Buildings

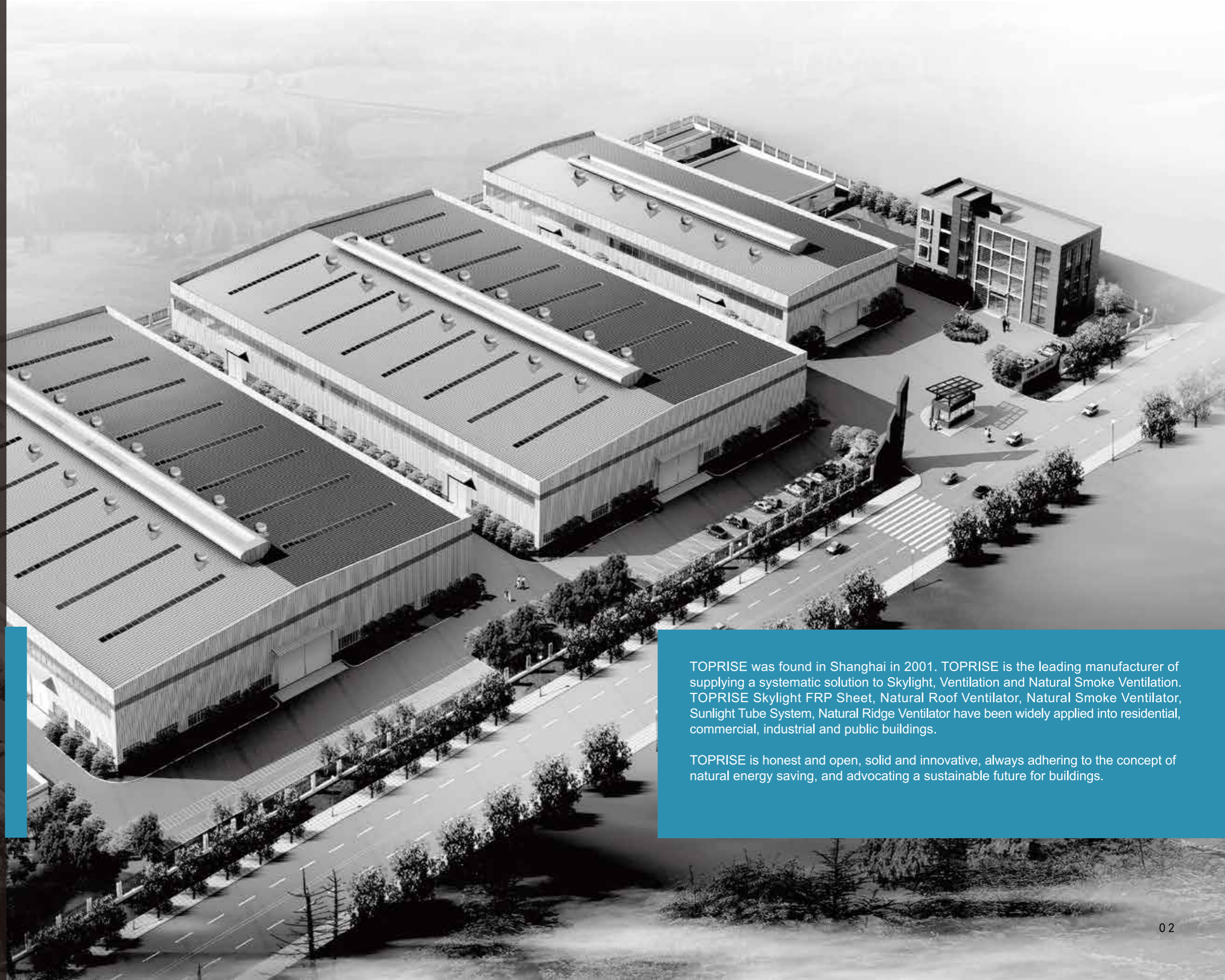
## **CONTENTS**

COMPANY PROFILE .....	01
TOPRISE TURBINE VENTILATOR INTRODUCTION.....	09
TOPRISE 600/700/900 STRAIGHT VANES VENTILATOR.....	12
TOPRISE STATIC VENTILATOR .....	14
TOPRISE 300/500/600 NATURAL VENTILATOR .....	16
ADVANTAGES OF TOPRISE FLUOROCARBON COATING ALUMINUM ALLOY VENTILATOR .....	17
VENTILATOR EXHAUST CALCULATION AND DETERMINATION .....	19
RIDGE VENTILATOR INTRODUCTION .....	28
RIDGE VENTILATOR .....	30-34
GREEN BUILDING&OUR CLIENTS .....	39

# COMPANY PROFILE

TOPRISE is the leading manufacturer of natural skylight and ventilation products. We have been exporting our products to lots of countries since 2001.

TOPRISE is committed to creating a natural, safe and healthy working and living environment. Let sunlight be everywhere, and let buildings breathe freely.



TOPRISE was found in Shanghai in 2001. TOPRISE is the leading manufacturer of supplying a systematic solution to Skylight, Ventilation and Natural Smoke Ventilation. TOPRISE Skylight FRP Sheet, Natural Roof Ventilator, Natural Smoke Ventilator, Sunlight Tube System, Natural Ridge Ventilator have been widely applied into residential, commercial, industrial and public buildings.

TOPRISE is honest and open, solid and innovative, always adhering to the concept of natural energy saving, and advocating a sustainable future for buildings.

## Our Systematic Service System

TOPRISE hold a professional designing team for supplying systematic solution to natural skylight, ventilation and smoke ventilation. We pay high attention to quality control in every procedure such as purchasing, production, package, logistics and installation. We provide perfect user experience for you with our professional product and service.



## Our Product R&D

We have professional and experienced R&D team to supply product R&D and solution to skylight, ventilation and smoke ventilation.



## Our Sales Service Team

Our domestic sales network spreads all over China. Our headquarter is located in Shanghai. We have offices in Beijing, Guangzhou, Xian, Chongqing, Wuhan, Shenyang, Dalian, Chengdu and so on. Our products and services have been supplied to more than 50 countries all over the world, in which it takes high market share in Australia, New Zealand, South America, Southeast Asia, Europe and Mid East.



## Our Production Service

TOPRISE apply lean manufacturing management. We are always strictly conforming to ISO9001 standard to control the quality in every procedure.



## Our Installation Team

TOPRISE provide customized construction plan and professional technical support.



## Our Logistics Service

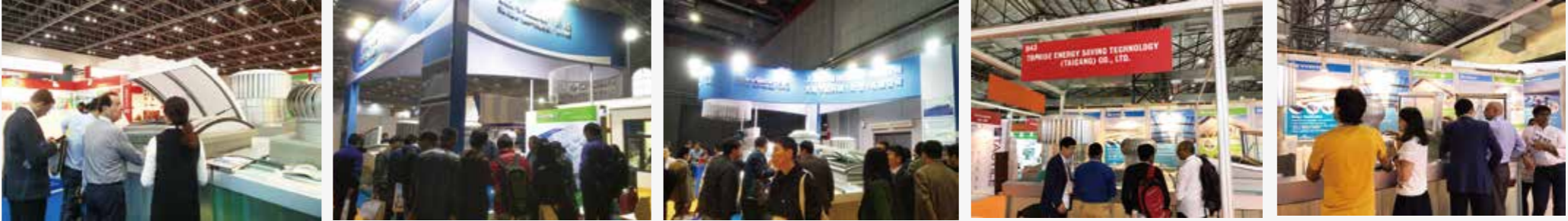
We have independent logistics department and systematic logistics management system. We supply safe, reliable, economical and high quality logistics service for our clients.



Our domestic sales network spreads all over China. Our headquarter is located in Shanghai. We have offices in Beijing, Guangzhou, Xian, Chongqing, Wuhan, Shenyang, Dalian, Chengdu and so on.

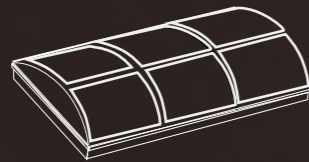
## OUR GLOBAL MARKET

TOPRISE has been always insisting on high end quality. Our products have been sold to more than 50 countries and highly appreciated by our clients around the world. TOPRISE are honored to get GREEN Level in the factory audit by Woolworths Australia and become the approval vendor of Woolworths Australia. We are always looking at creating energy saving products to carry out environment friendly ideas.



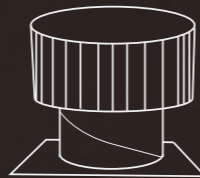


## PRODUCTS



### Smoke Vents (NSHEVS)

TOPRISE supply Natural Smoke and Heat Exhaust Ventilation System with electric control or pneumatic control system. It's linked with fire fighting system. We supply safe, reliable, waterproof and heat insulated smoke ventilation system.



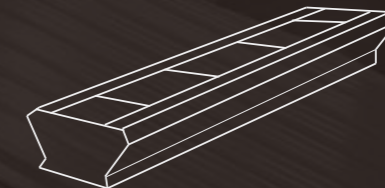
### Natural Roof Ventilator

TOPRISE supply high quality natural roof ventilator in spherical shape and straight vanes shape for residential, commercial and industrial buildings. It works by natural wind and doesn't need any power. It's energy saving, more efficient and corrosion resistant.



### FRP Sheet

TOPRISE supply high quality FRP Skylight Sheet and FRP Corrosion Resistant Sheet for residential, commercial and industrial buildings. We can customize different profiles, thickness and length as per clients requirement.



### Ridge Ventilator

TOPRISE supply natural ridge ventilator and slope ventilator. It works by natural wind and pressure difference generated by temperature difference between indoors and outdoors. It can provide skylight and ventilation dual function. Damper is available for opening or closing.



### Tubular Skylight

TOPRISE supply natural tubular skylight. It can collect and transmit natural sunlight into indoors, thereby we can enjoy more natural sunlight and save electricity cost. It's energy saving and eco-friendly.



## TOPRISE TURBINE VENTILATOR INTRODUCTION

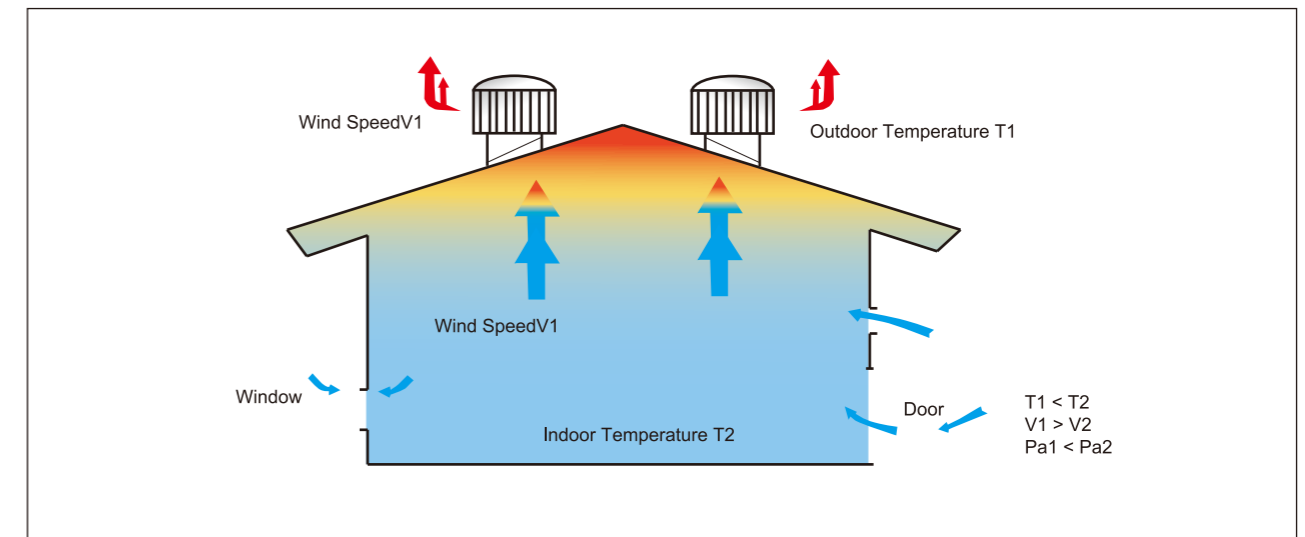
Wind driven turbine ventilator is driven by natural horizontal wind and vertical airflow caused by temperature difference between indoor and outdoor. Due to the scientific design of vanes, turbine ventilator can even be driven under breeze. The rotating turbine head will produce centrifugal force, which exhausts the hot air, fume, humidity. As air exhausts, negative pressure zone will be formed under the turbine head where fresh air could get into constantly. The turbine head keeps on rotating which achieves the purpose of ventilation and smoke exhausting.

Various models such as 150/200/250/300/500/600/680/800/900 are available in TOPRISE. Specially, high quality fluorocarbon aluminum alloy and 304/2B stainless steel ventilator have been our hot sale and popular products internationally. TOPRISE ventilator is energy saving, noiseless, efficient exhausting, good self-cleaning, rain-proof. That conforms to national energy-saving and environmental protection policy. While expanding the market, TOPRISE is researching, extracting from experience and learning advanced technique to promote new products with more effective ventilation and higher quality.

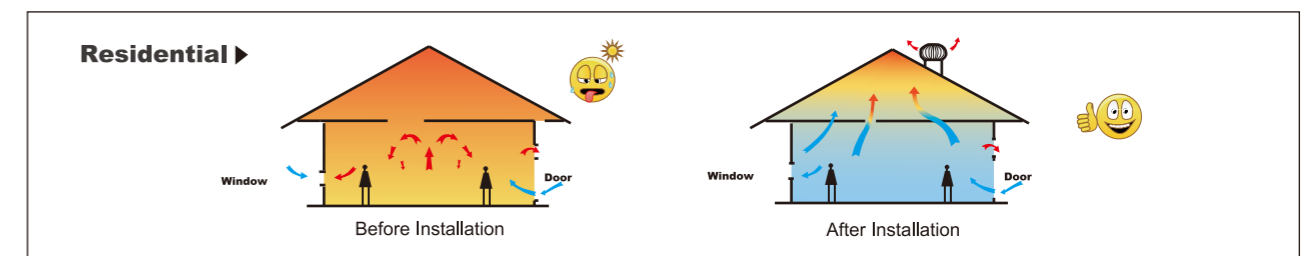
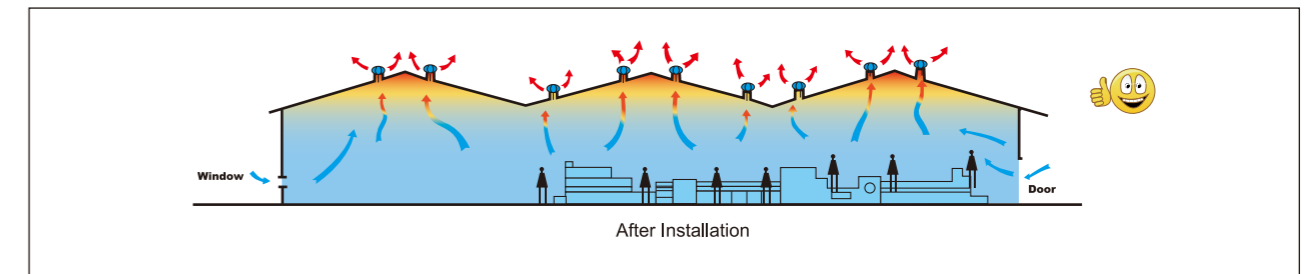
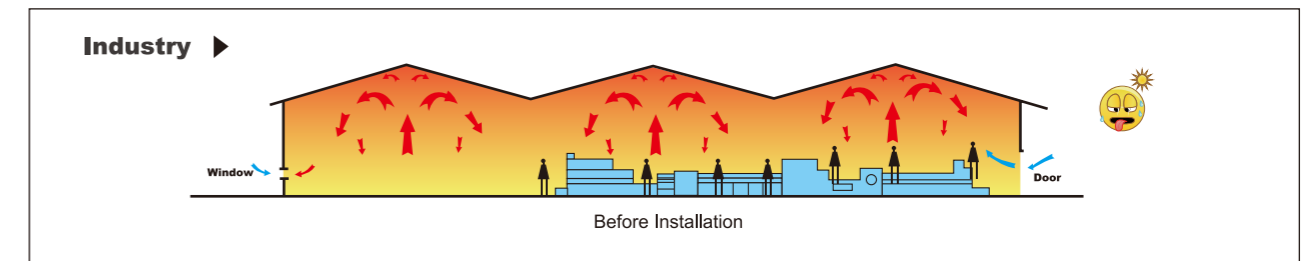


## Bernoulli's Theorem

The sum of static pressure and dynamic pressure is a constant, i.e. the greater the fluid speed is, the smaller the pressure will become, vice versa.



With the high cost-performance of safety, high-efficiency, low noise and non-power, wind turbine ventilator can be used for long time. It is the perfect ventilation equipment for industrial factory, logistic warehouse, commercial and civil buildings, because it can keep fresh air flowing and inspire people to improve their work efficiency.





## TOPRISE 600/700/900 STRAIGHT VANES VENTILATOR

TOPRISE straight vanes ventilator adopts vertical vanes design, which provides higher flow coefficients and greater exhausting capacity. Less ventilators are required for your buildings so that cost can be reduced. Meanwhile, it's rain- proof and dust-proof. Availability of varipitch which is adjustable to a wide range of roof angles ensures easier installation. It's made from light weight and corrosion resistant aluminum alloy, which makes ventilator respond well to low wind speed and longer service life. No need frequent maintenance and replacement. We use ASAHI stainless steel self-lubricating bearing. It's specially designed for commercial and industrial buildings to reduce temperature and pollutants in buildings and to deliver a better working environment.

In order to meet requirements of clients in cold areas, TOPRISE specially research 900mm ventilator with damper. Clients may close it in winter if needed.



TOPRISE ventilator can be powder coated with different colors as per clients requirements.



**Top Cover and Vanes:** Anodized Aluminum Alloy, Corrosive Resistant

**Varipitch:** Fluorocarbon Coating Aluminum Alloy, Corrosive Resistant

**Upper Bearing:** Permanently Sealed and Lubricated Cylinder Bearing

**Lower Bearing:** Japanese ASAHI Permanently Sealed and Lubricated Bearing



Higher Ventilation Efficiency,  
Smoke Exhausting



Less Use Quantity,  
Saving Cost



Environmental  
Protection, Energy Saving



Good Anti- corrosion,  
Longer Service Life



Varipitch Design,  
Easy Installation,  
Free Maintenance



Model	Varipitch Diameter (mm)	Ventilator Height (mm)	Head Diameter (mm)	Varipitch Height (mm)	Base (mm)	Weight (KG)
600	600	658	785	230	1000 × 1000	12.5
700	700	780	870	300	1000 × 1000	14.9
900	900	926	1096	390	1200 × 1200	26.0





## TOPRISE STATIC VENTILATOR

Static natural ventilator does not revolve, but it can exchange and improve the indoor air flow. It can exhaust hot or moist out by temperature difference between indoor and outdoor. This product is no energy cost, and environmental friendly. It is applied in stadium, warehouse, workshop, farmhouse, indoor parking garage. As static ventilator does not revolve, it looks balanced, quiet, no vibration and provides longer service life. Static ventilators are very popular and chosen by architects and users.

### Advantages of TOPRISE Static Ventilators

1. All aluminum alloy construction
2. Anodized or powder coating on aluminum alloy- long term anti- corrosive and durability.
3. Anodized aluminum alloy section bar for internal support.
4. Aluminum alloy rivets, EPDM sealing ring are fit on top rivets for sealing and waterproof.
5. Reasonable design provides for excellent air flow, ventilation coefficient achieves 1:1.
6. Its design prevents rain and snow from entering inside.
7. Rustproof anti-bird mesh is available inside.
8. Varipitch design allows easy DIY installation and suitable for roofs with any angles.
9. Cyclone region rating is available.



TOPRISE can make powder coating with different colors to meet requirements of various buildings.

Exhaust Capacity		
504 cbm of air Per HR	918 cbm of air Per HR	1317 cbm of air Per HR

Model	Varipitch Diameter (mm)	Ventilator Height (mm)	Head Diameter (mm)	Varipitch Height (mm)	Base (mm)	Vanes Qty	Weight (KG)
300	300	440	460	190	500*500	2	2.1
500	500	460	700	190	750*800	2	4.3
700	700	725	980	290	1000*1000	3	9.4





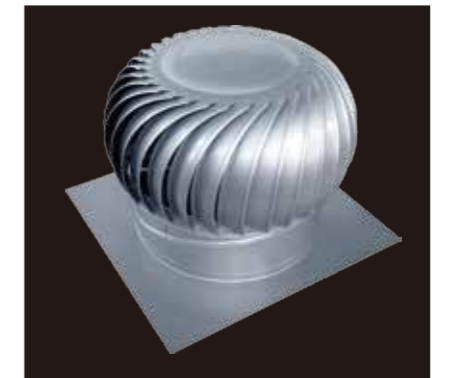
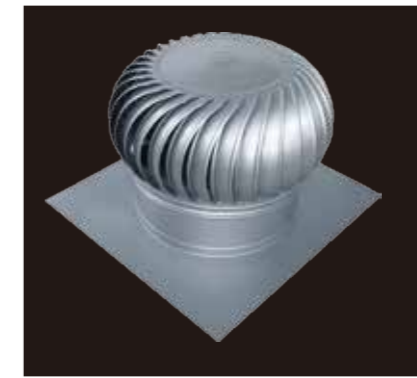
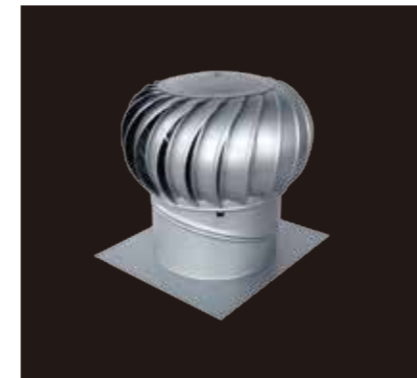
## TOPRISE 300/500/600 NATURAL VENTILATOR

### 300/500/600 Aluminum Alloy Ventilator

- ◆ Material: Corrosion resistant fluorocarbon coating aluminum alloy. NSK stainless steel enclosed self lubricating bearings, stainless steel or nylon support.
- ◆ Application: Workshops and warehouses with high corrosive environment.
- ◆ Warranty: 15 years

### 300/500/600 Stainless Steel Ventilator

- ◆ Material: High quality 304/2B stainless steel. NSK stainless steel enclosed self lubricating bearings, stainless steel or nylon support.
- ◆ Application: Industrial workshops and warehouses, commercial and residential buildings.
- ◆ Warranty: 10 years



Model	Varipitch Diameter (mm)	Ventilator Height (mm)	Head Diameter (mm)	Varipitch Height (mm)	Base (mm)	Vaner Qty	Weight (KG)	
							AA	S.S
300	300	450	430	190	400*450	21	2.5	2.9
500	500	525	635	190	750*800	32	5.0	6.3
600	600	625	750	215	800*850	32	6.4	8.5

## ADVANTAGES OF TOPRISE FLUOROCARBON COATING ALUMINUM ALLOY VENTILATOR

TOPRISE takes 3005# aluminum alloy as base material, with its surface being treated with anti-oxygenized film, on which sprays 20um fluorocarbon coating. At present, fluorocarbon coating aluminum alloy ventilator is certainly the lightest in weight. Thus, the pressure on the bearings is smaller and revolving ability is naturally better than that made of other materials. Fluorocarbon coating aluminum alloy ventilators provide superior weather resistance, wearability, longer service life, light weight and higher sensitivity than other materials. Fluorocarbon coating aluminum alloy ventilator is the ideal choice for your buildings.



**Lighter Weight**



**Faster Revolving**



**Corrosion Resistance**



**Higher Efficiency**



**Longer Service Life**



There are different quality levels of stainless steel. Under normal usage environments, the performance of corrosion resistance of 304 or 316 stainless steel is good enough compared with other stainless steel.

However, confronted with some badly corrosive and terrible air atmosphere, such as coastal workshops, pickling workshops and so on, stainless steel ventilators are unable to meet the requirements. If we use higher quality of stainless steel, the cost will be increased greatly. And mill finish aluminum alloy is easy to be oxidized and corroded.

TOPRISE has been leading in improving the performance and service life of ventilators. TOPRISE fluorocarbon coating aluminum alloy ventilators solve the problems of corrosion, making it possible to be used in high corrosive environments.



## ACCESSORY STRUCTURE OF TOPRISE VENTILATOR

### STRUCTURE FOR NYLON SUPPORT



**NYLON SHAFT PIPE**

**C45 STEEL SHAFT**

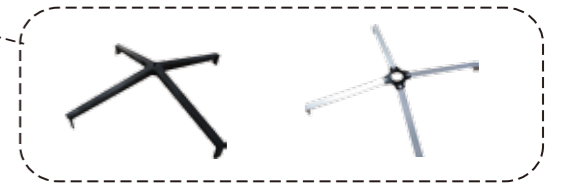
**NSK BEARING**

Japanese NSK totally enclosed and free lubricated bearing. C45 Steel shaft with strong abrasive resistance. The shaft is enclosed by fire rated nylon material.



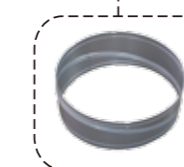
#### NYLON SUPPORT

TOPRISE Roof Ventilator adopts fire rated nylon support. It is light in weight, has metal strength, plastic tenacity and better recovering performance.



**BLADE RING- SEVERAL ROLLING, STRONGER**

Several stiffeners are made to make the ventilator stronger.



#### VARIPITCH- ADJUSTABLE NECK

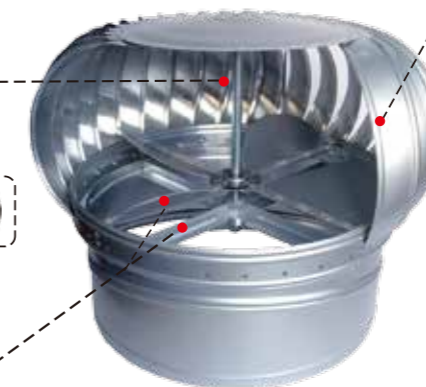
TOPRISE use unique varipitch which can be installed to any roofs between the oblique angle of 0°-22.5° or 0°-30°. It is so easy and fast to install so as to reduce installation cost.

### STRUCTURE FOR METAL SUPPORT



**C45 STEEL SHAFT**

**NSK BEARING**



#### RAIN- PROOF DOUBLE CURVED BLADE DESIGN



Wave-shaped blades are designed on the principle of fluid dynamics, which increases the contact area between blades and wind. Even under breeze, ventilator can have greater revolving ability so as to keep the wind from all directions blowing backward into the air channel. Meanwhile, revolving speed of turbine head can be increased by wind in all directions, playing an important role in water proofing, snow proofing and air venting. Due to the wave-shaped design, the mechanical strength of ventilator can be increased, and capacity to bear pressure reaches the best of all the similar products.



#### UNIQUE INNER FAN

TOPRISE unique light weight aluminum alloy inner fan design increases exhaust capacity of ventilator effectively. (Inner fan could be added depending on your demand.)

#### METAL SUPPORT

There are grooves in the middle of support legs increasing its strength. We use tighten piece to fix the support securely instead of welding to avoid rusting in welding places.



#### STAINLESS STEEL CONNECTING PIECES, ALUMINUM RIVETS, FASTENING SCREWS

Stainless steel bearing holders are used for fixing bearing.

## VENTILATOR EXHAUST CALCULATION AND DETERMINATION

### How to Calculate the Quantity of Ventilators

1. Determine the indoor volume of the building in cubic meters (length X width X height)=VOL .
2. According to the building type,determine air changes per hour required from the table I=N .
3. Determine the standard wind speed according to local weather records (1.2.3.4and5m/s) thus air exhaust capacity can be reached from table II=Lp

### The Quantity Calculation Formula

$$n = \frac{VOL \times N}{Lp}$$

Table I Air Changes Of Different Types(N)

Air Changes of Different Types ( N )			
Building Type	Air Exhaust times/ hour	Building Type	Air Exhaust times/ hour
Storehouses	3-5	Coking Factories	6-12
Common Factories & Workshops	3-8	Washing Rooms	7-15
Gyms, Tennis Houses	3-8	Generating Stations, Converting Stations	8-20
Assembly Halls	6-12	Boiler Rooms	12-30
Garages	6-12	Electric welding Workshops	12-21
Paper Mills	8-15	Food Factories	12-22
Electroplating Workshops	10-15	Plating Workshops	16-30
Acid-washing Workshops	11-18	Lampblack Workshops	16-30

Table II Exhaust Capacity Types

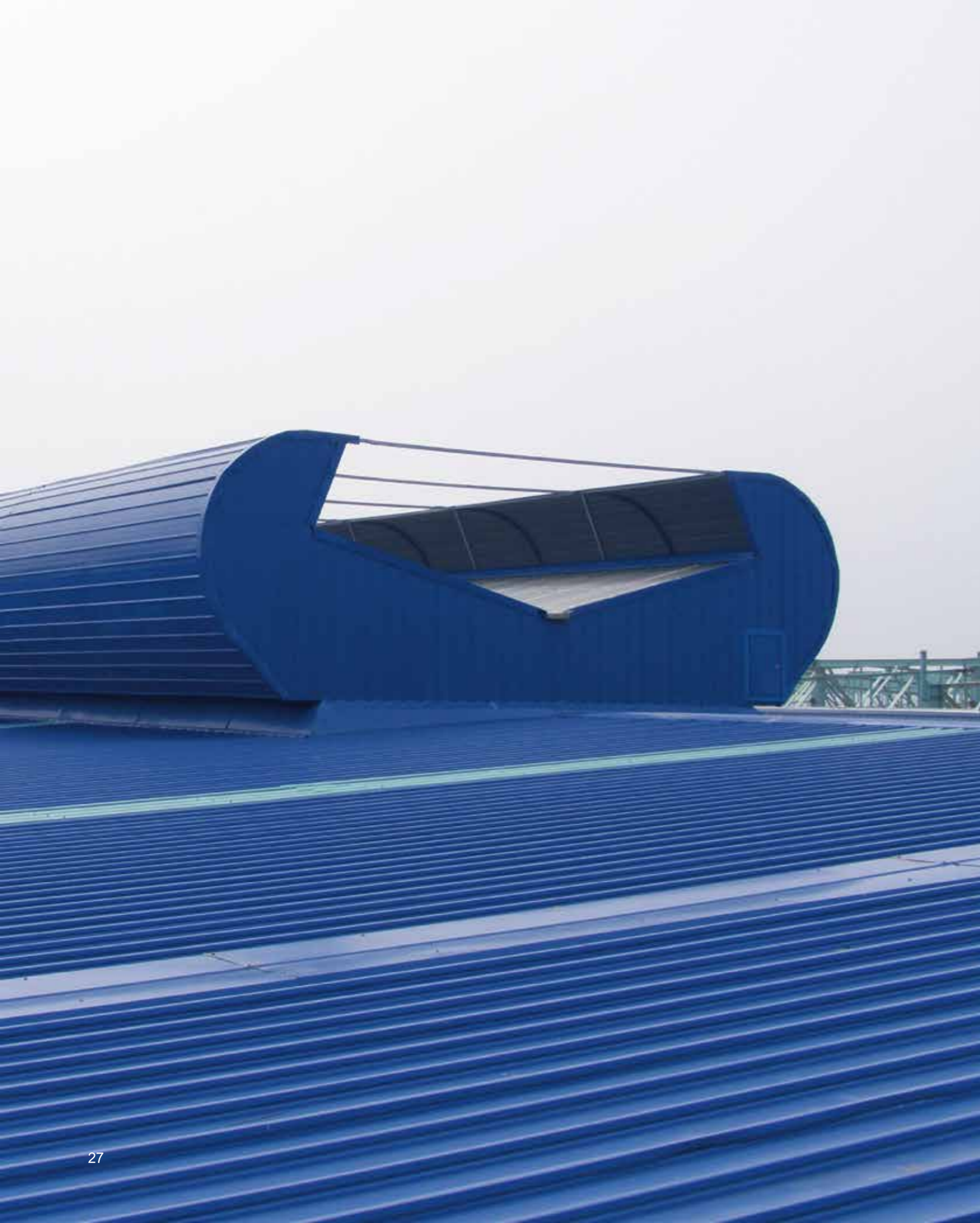
MODEL	TP-w h m V	3								5								10								Lp Exhaust Capacity m <sup>3</sup> /h
		6		10		15		20		6		10		15		20		6		10		15		20		
		S.S	A.A	S.S	A.A	S.S	A.A	S.S	A.A	S.S	A.A	S.S	A.A	S.S	A.A	S.S	A.A	S.S	A.A	S.S	A.A	S.S	A.A	S.S	A.A	
150	1.0	-	150	-	210	-	290	-	350	-	260	-	310	-	390	-	430	-	290	-	510	-	620	-	730	
	2.0	-	200	-	340	-	470	-	550	-	500	-	630	-	700	-	780	-	500	-	660	-	830	-	860	
	3.0	-	410	-	680	-	730	-	820	-	680	-	770	-	870	-	960	-	700	-	760	-	950	-	970	
	4.0	-	650	-	810	-	960	-	1060	-	930	-	1080	-	1200	-	1260	-	910	-	1120	-	1170	-	1200	
	5.0	-	1000	-	1050	-	1170	-	1300	-	1020	-	1160	-	1250	-	1290	-	1020	-	1160	-	1230	-	1370	
200	1.0	-	180	-	230	-	320	-	380	-	300	-	340	-	410	-	460	-	350	-	580	-	700	-	810	
	2.0	-	260	-	370	-	500	-	590	-	550	-	680	-	760	-	830	-	590	-	750	-	920	-	930	
	3.0	-	470	-	720	-	770	-	880	-	730	-	830	-	930	-	1030	-	800	-	870	-	1060	-	1000	
	4.0	-	720	-	900	-	1060	-	1150	-	1000	-	1130	-	1250	-	1320	-	1060	-	1250	-	1280	-	1300	
	5.0	-	1080	-	1120	-	1230	-	1400	-	1100	-	1230	-	1320	-	1360	-	1180	-	1300	-	1390	-	1430	
250	1.0	-	220	-	280	-	360	-	430	-	320	-	370	-	450	-	500	-	430	-	660	-	870	-	990	
	2.0	-	290	-	450	-	560	-	660	-	580	-	700	-	790	-	860	-	670	-	820	-	1000	-	1100	
	3.0	-	510	-	820	-	870	-	980	-	790	-	880	-	970	-	1070	-	880	-	950	-	1130	-	1180	
	4.0	-	780	-	1100	-	1150	-	1220	-	1080	-	1150	-	1280	-	1350	-	1150	-	1330	-	1390	-	1500	
	5.0	-	1160	-	1230	-	1350	-	1530	-	1200	-	1260	-	1370	-	1410	-	1260	-	1390	-	1530	-	1610	
300	1.0	230	270	290	348	350	420	410	490	310	360	370	430	420	502	460	550	430	510	600	720	790	940	890	1050	
	2.0	270	320	430	510	520	610	670	760	510	610	620	740	700	840	790	930	610	720	740	870	930	1110	1020	1220	
	3.0	490	580	780	930	810	960	910	1080	740	870	830	990	920	1100	1000	1201	840	1002	950	1090	1080	1280	1120	1340	
	4.0	720	860	1050	1240	1100	1290	1230	1350	1010	1204	1102	1301	1250	1480	1310	1538	1100	1310	1271	1490	1360	1580	1420	1680	
	5.0	1100	1310	1280	1480	1410	1580	1520	1640	1230	1450	1320	1490	1400	1630	1480	1680	1270	1521	1420	1670	1550	1810	1650	1910	
500	1.0	710	910	880	1090	970	1090	1100	1410	785	1011	960	1230	1179	1450	1350	1750	990	1250	1250	1570	1550	1991	1803	2040	
	2.0	1150	1390	1220	1540	1250	1570	1370	1710	1109	1430	1250	1570	1410	1820	1560	2010	1260	1630	1480	1640	1850	2270	1978	2530	
	3.0	1520	1640	1850	2246	1620	2080	1710	2215	1480	1840	1620	2010	1760	2250	1870	2420	1630	2105	1810	2250	2160	2710	2307	2860	
	4.0	2020	2570	2150	2610	2040	2610	2218	2805	1970	2450	2050	2650	2112	2730	2240	2910	2040	2620	2180	2750	2480	3200	2740	3301	
	5.0	2410	3110	2430	3120	2460	3130	2526	3220	2406	3120	2460	3130	2590	3370	2640	3440	2460	3150	2610	3380	2850	3410	3290	3670	
600	1.0	970	1164	1170	1320	1402	1680	1609	1950	1170	1390	1420	1720	1700	2110	2010	2403	1420	1840	1810	2340	2210	2650	2603	3180	
	2.0	1500	1805	1650	2050	1800	2187	2003	2503	1630	1950	1810	2270	2070	2580	2350	2950	1820	2360	2150	2780	2501	3130	2840	3490	
	3.0	2150	2440	2200	2660	2350	2950	2470	3040	2130	2730	2330	2808	2504	3059	2701	3410	2350	3050	2602	3380	2900	3720	3202	4060	
	4.0	2770	3157	2820	3202	2950	3420	3207	3720	2850	3420	2950	3670	3050	3830	3207	4060	2950	3780	3150	4090	3405	4320	3650	4540	
	5.0	3400	3970	3490	4150	3550	4230	3620	4480	3450	4450	3550	4560	3660	4710	3750	4870	3540	4607	3740	4860	3950	5030	4150	5195	
600SV	1.0	1611	-	1943	-	2328	-	2650	-	1911	-	2320	-	2754	-	3256	-	2300	-	2932	-	3580	-	4061	-	
	2.0	2531	-	2784	-	3038	-	3380	-	2751	-	3054	-	3493	-	3966	-	3071	-	3628	-	4220	-	4615	-	
	3.0	3715	-	3802	-	4061	-	4268	-	3681	-	4026	-	4327	-	4667	-	4061	-	4496	-	5011	-	5328	-	
	4.0	4936	-	5025	-	5257	-	5715	-	5079	-	5257	-	5435	-	5715	-	5257	-	5613	-	6068	-	6263	-	
	5.0	6426	-	6596	-	6710	-	6744	-	6427	-	6614	-	6819	-	6986	-	6595	-	6968	-	7359	-	7445	-	
700SV	1.0	-	2136	-	2542	-	2923	-	3289	-	2491	-	2964	-	3468	-	3988	-	2905	-	3457	-	4045	-	4651	
	2.0	-	3087	-	3488	-	3907	-	4313	-	3419	-	3863	-	4327	-	4776	-	3786	-	4278	-	4791	-	5289	
	3.0	-	4695	-	5258	-	5837	-	6391	-	5153	-	5772	-	6406	-	7015	-	5656	-	6335	-	7032	-	7700	
	4.0	-	5887	-	6475	-	7123	-	7764	-	6346	-	6980	-	7679	-	8370	-	6841	-	7525	-	8277	-	9022	
	5.0	-	7600	-	8132	-	8701	-	9136	-	7969	-	8527	-	9124	-	9580	-	8356	-	8941	-	9567	-	10046	
900SV	1.0	-	2848	-	3389	-	3897	-	4385	-	3321	-	3952	-	4624	-	5318	-	3873	-	4609	-	5393	-	6202	
	2.0	-	4410	-	4983	-	5581	-	6162	-	4884	-	5519	-	6181	-	6824	-	5408	-	6111	-	6845	-	7556	
	3.0	-	7825	-	8764	-	9728	-	10652	-	8589	-	9619	-	10677	-	11692	-	9427	-	10558	-	11720	-	12833	
	4.0	-	9344	-	10278	-	11306	-	12324	-	11007	-	11080	-	12188	-	13285	-	10859	-	11944	-	13139	-	14321	
	5.0	-	11259	-	12047	-	12890	-	13535	-	11806	-	12633	-	13517	-	14193	-	12380	-	13247	-	14174	-	14883	

V = (Wind Speed) (m/s)      m = (Material)      h = (Roof Height) (m)      T<sub>p-w</sub> = (Temperature Difference Between Indoors and Outdoor s) (°C)







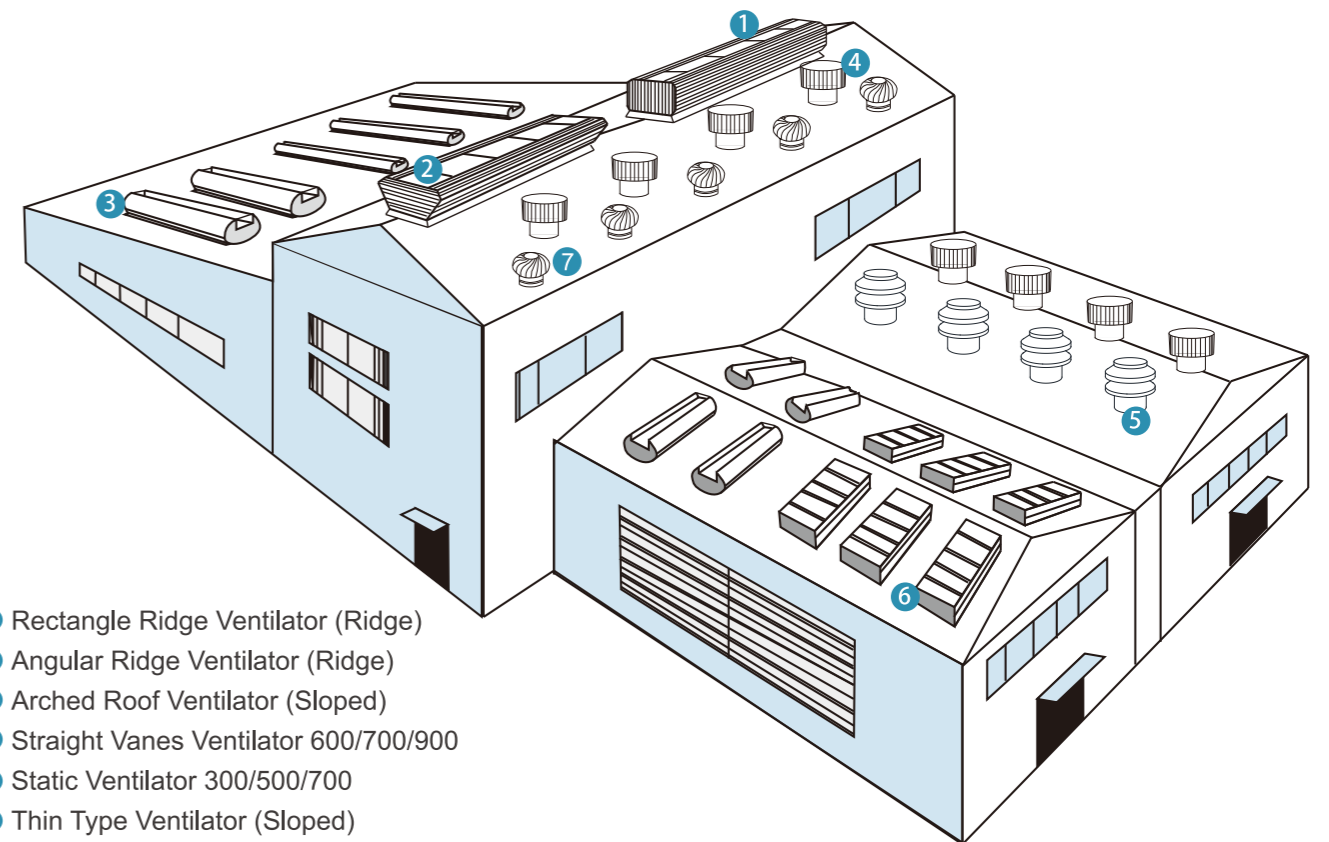


## RIDGE VENTILATOR INTRODUCTION

Roof Ridge Ventilator is a huge integrate equipment that could ventilate, exhaust and lighting. It is composed of pressed color steel plate, FRP Sheet, steel structure frame and some other associated parts. Roof ventilator has been applied in buildings of various industries such as electric power, metallurgy, chemistry, electricity, shipbuilding and so on.

### PRODUCT CHARACTERS

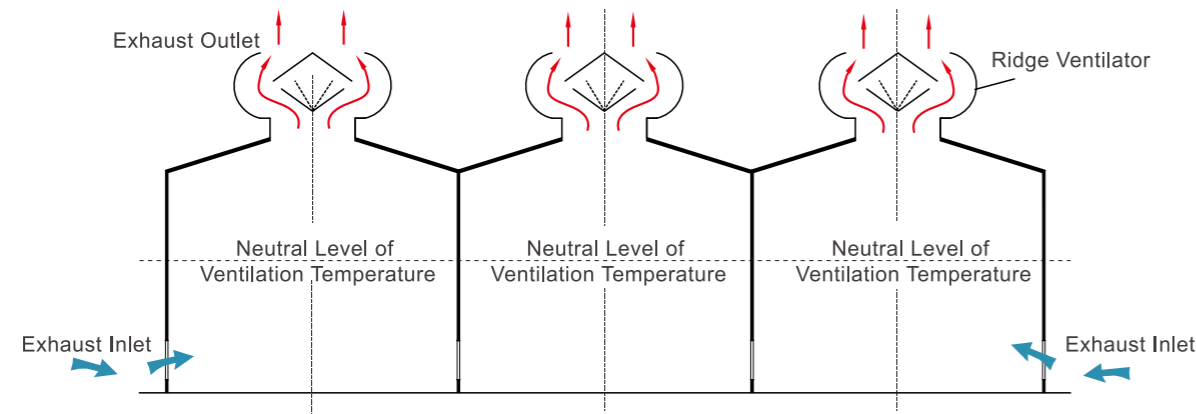
1. Roof ventilator is composed of main and secondary skeleton. It is convenient to be delivered and installed.
2. The main and secondary skeleton are welded in our factory. They are solid and steady.
3. The main skeleton is welded with based steel on the ridge ventilator throat together, so that it could be a part of the roof.
4. The side board adopts pressed color steel plate, bent color steel plate is used for edge flashing.
5. Rainproof board adopts high quality FRP Sheet, which makes sure the function of lighting, smoke exhausting and ventilating.
6. Setting a flow-guide plate to avoid rain and snow inside.
7. Setting a gutter in ridge ventilator, rain can flow onto the roof along gutter to avoid noise and flashing.



- ① Rectangle Ridge Ventilator (Ridge)
- ② Angular Ridge Ventilator (Ridge)
- ③ Arched Roof Ventilator (Sloped)
- ④ Straight Vanes Ventilator 600/700/900
- ⑤ Static Ventilator 300/500/700
- ⑥ Thin Type Ventilator (Sloped)
- ⑦ Spherical Shape Ventilator 200/300/500/600

## PRODUCT FUNCTION PRINCIPLE

Utilizing heat and air pressure caused by temperature difference indoor and outdoor to realize vertical ventilation.



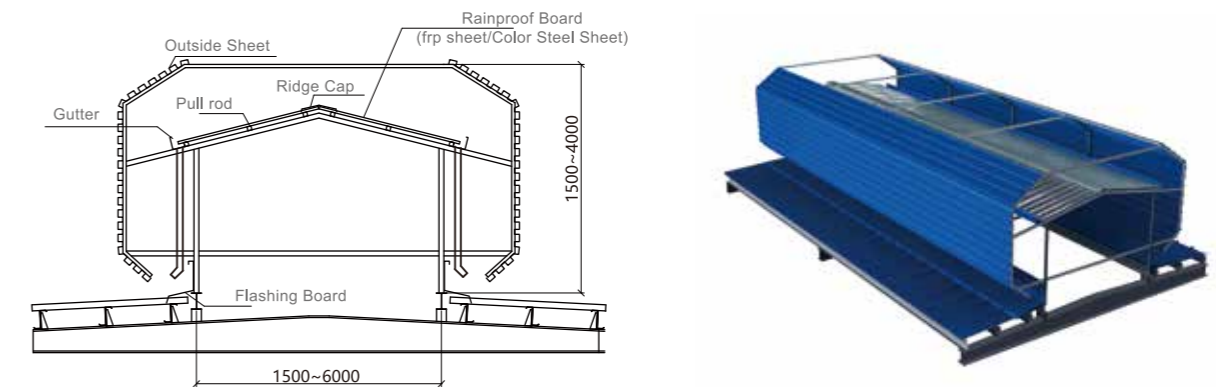
## APPLICATION

1. ( $3\text{ }^{\circ}\text{C} < \text{Temperature Difference} \leq 5\text{ }^{\circ}\text{C}$ ) Factory or warehouse without producing hot gas; reference air change rate is 6-10/hour)
2. ( $3\text{ }^{\circ}\text{C} < \text{Temperature Difference} \leq 5\text{ }^{\circ}\text{C}$ ) Factory producing little hot gas or smoke; reference air change rate is 10-20/hour)
3. ( $10\text{ }^{\circ}\text{C} < \text{Temperature Difference} \leq 15\text{ }^{\circ}\text{C}$ ) Factory producing moderate hot gas or smoke; reference air change rate is 20-30/hour)
4. ( $\text{Temperature difference} \geq 15\text{ }^{\circ}\text{C}$ ) Factory producing much more hot gas or smoke; reference air change rate is 30-35/hour)



## TOPRISE-S-1 Ridge Ventilator (Open Model)[Rectangle Model]

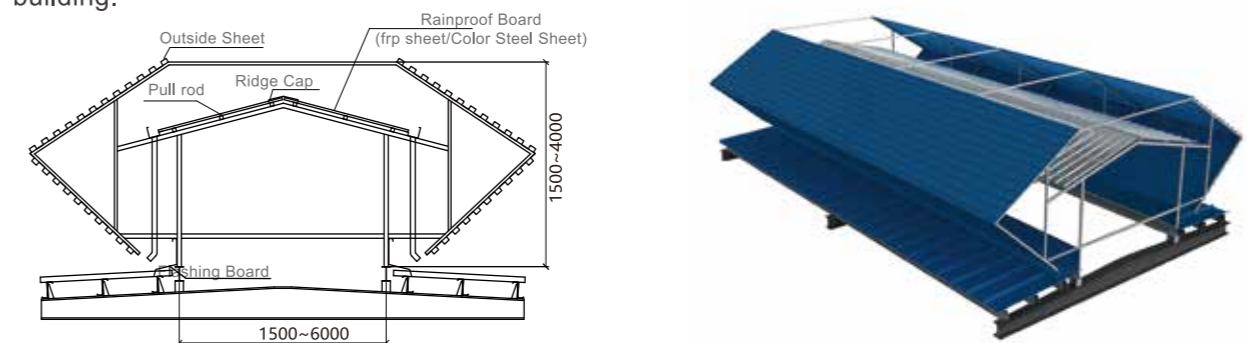
With rectangle shape, the structure which is simple and being designed to windshield in top and bottom of two sides can effectively reduce the wind pressure resistance. The internal structure design is reasonable; and damper available can prevent air from flowing back to indoors. It is suitable for warehouse, workshop and public building.



Ridge Ventilator Code	Throat Width (mm)	Throat Length (mm)	Exhaust Area per Meter (m <sup>2</sup> )	Height (mm)	Electromotor Power (kw/m)
1530n (1540n)	1500	3000×n, 4000×n (used for pressed color steel plate or concrete))	1.20	1500	(No Motor)
2030n (2040n)	2000		1.60	1800	
2530n (2540n)	2500		2.00	2000	
3030n (3040n)	3000		2.40	2500	
4030n (4040n)	4000		3.20	3000	
4530n (4540n)	4500		3.60	3300	
5030n (5040n)	5000		4.00	3500	
6030n (6040n)	6000		4.80	4000	

## TOPRISE-S-2 Ridge Ventilator (Open Model) [Lozenge Model]

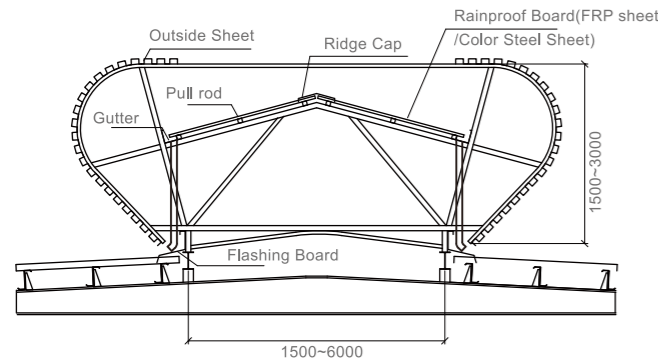
With lozenge shape, the structure which is simple and being designed to pointed type in two sides can effectively reduce the wind pressure resistance. The internal structure design is reasonable; and damper available can prevent air from flowing back to indoors. It is suitable for warehouse, workshop and public building.



Ridge Ventilator Code	Throat Width (mm)	Throat Length (mm)	Exhaust Area per Meter (m <sup>2</sup> )	Height (mm)	Electromotor Power (kw/m)
1530n (1540n)	1500	3000×n, 4000×n (used for pressed color steel plate or concrete))	1.20	1500	(No Motor)
2030n (2040n)	2000		1.60	1800	
2530n (2540n)	2500		2.00	2000	
3030n (3040n)	3000		2.40	2500	
4030n (4040n)	4000		3.20	3000	
4530n (4540n)	4500		3.60	3300	
5030n (5040n)	5000		4.00	3500	
6030n (6040n)	6000		4.80	4000	

## TOPRISE-S-3 Ridge Ventilator (Open Model) [Circular and Simple Model]

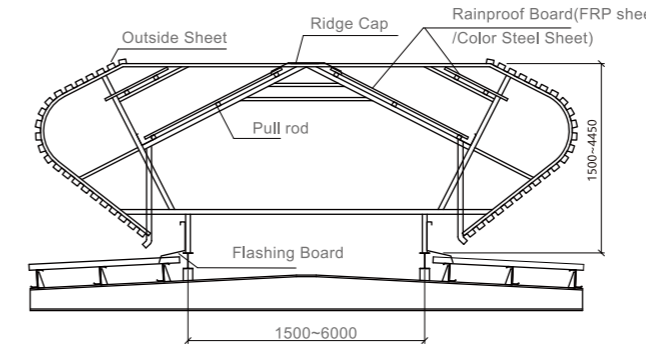
With circular shape, the structure which is simple and being designed to circular in two sides can effectively reduce the wind pressure resistance. The internal structure design is reasonable; It is suitable for warehouse, workshop and public building.



Ridge Ventilator Code	Throat Width (mm)	Throat Length (mm)	Exhaust Area per Meter (㎡)	Height (mm)	Electromotor Power (kw/m)
1530n (1540n)	1500	3000×n, 4000×n (used for pressed color steel plate or concrete))	1.20	1500	(No Motor)
2030n (2040n)	2000		1.60	1800	
2530n (2540n)	2500		2.00	2000	
3030n (3040n)	3000		2.40	2200	
4030n (4040n)	4000		3.20	2500	
4530n (4540n)	4500		3.60	3650	
5030n (5040n)	5000		4.00	2800	
6030n (6040n)	6000		4.80	3000	

## TOPRISE-S-5 Ridge Ventilator (Open Model) [Circular and General]

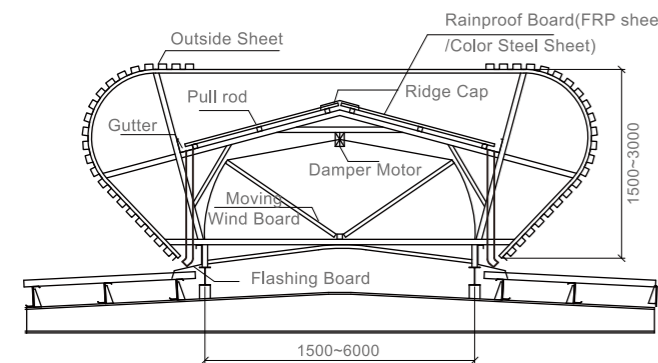
With circular shape, the structure which is simple and being designed to circular in two sides can effectively reduce the wind pressure resistance. Reasonable inner structure design and double layer rain proof panel on top can effectively prevent from rain and snow. It is suitable for huge workshop and public building.



Ridge Ventilator Code	Throat Width (mm)	Throat Length (mm)	Exhaust Area per Meter (㎡)	Height (mm)	Electromotor Power (kw/m)
1530n (1540n)	1500	3000×n, 4000×n (used for pressed color steel plate or concrete))	1.35	1500	(No Motor)
2030n (2040n)	2000		1.80	1800	
2530n (2540n)	2500		2.25	2150	
3030n (3040n)	3000		2.70	2500	
3530n (3540n)	3500		3.15	2850	
4030n (4040n)	4000		3.60	3200	
4530n (4540n)	4500		4.05	3600	
5030n (5040n)	5000		4.50	3850	
6030n (6040n)	6000	5.40	4450		

## TOPRISE-S-3 Ridge Ventilator (Damper Model) [Circular and Simple Model]

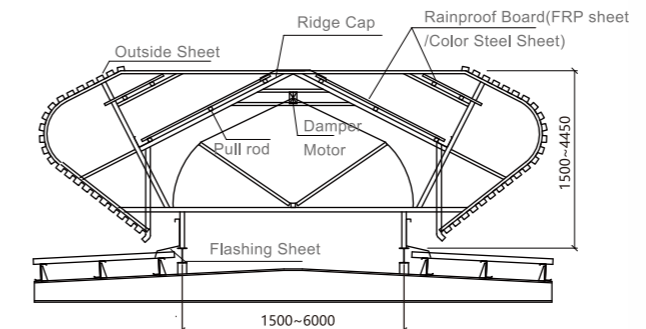
With circular shape, the structure which is simple and being designed to circular in two sides can effectively reduce the wind pressure resistance. The internal structure design is reasonable; Damper available can prevent air from flowing back to indoors. It is suitable for warehouse, workshop and public building.



Ridge Ventilator Code	Throat Width (mm)	Throat Length (mm)	Exhaust Area per Meter (㎡)	Height (mm)	Electromotor Power (kw/m)
1530n (1540n)	1500	3000×n, 4000×n (used for pressed color steel plate or concrete))	1.20	1500	0.12
2030n (2040n)	2000		1.60	1800	0.12
2530n (2540n)	2500		2.00	2000	0.12
3030n (3040n)	3000		2.40	2200	0.18
4030n (4040n)	4000		3.20	2500	0.18
4530n (4540n)	4500		3.60	3650	0.18
5030n (5040n)	5000		4.00	2800	0.18
6030n (6040n)	6000		4.80	3000	0.18

## TOPRISE-S-5 Ridge Ventilator (Damper Model) [Circular and General]

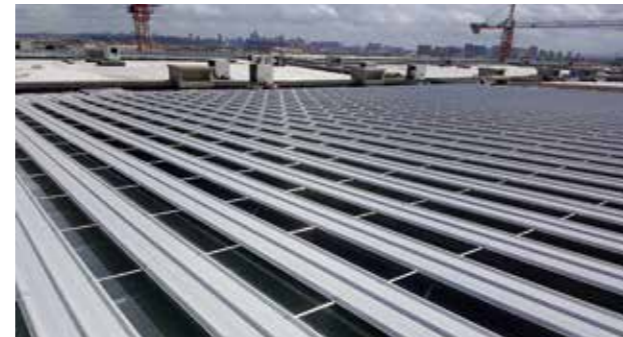
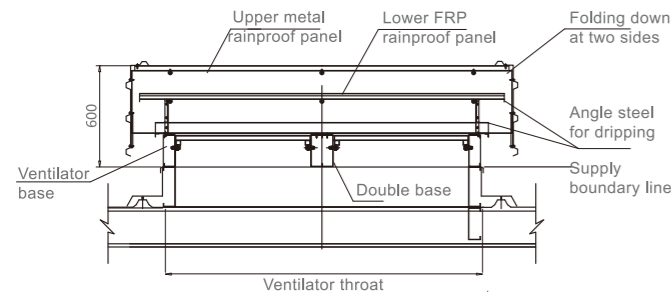
With circular shape, the structure which is simple and being designed to circular in two sides can effectively reduce the wind pressure resistance. Reasonable inner structure design and double layer rain proof panel on top can effectively prevent from rain and snow. Damper available can prevent air from flowing back to indoors. It is suitable for huge workshop and public building.



Ridge Ventilator Code	Throat Width (mm)	Throat Length (mm)	Exhaust Area per Meter (㎡)	Height (mm)	Electromotor Power (kw/m)
1530n (1540n)	1500	3000×n, 4000×n (used for pressed color steel plate or concrete))	1.20	1500	0.12
2030n (2040n)	2000		1.60	1800	0.12
2530n (2540n)	2500		2.00	2150	0.12
3030n (3040n)	3000		2.40	2500	0.12
3530n (3540n)	3500		2.80	2850	0.18
4030n (4040n)	4000		3.20	3200	0.18
4530n (4540n)	4500		3.60	3600	0.25
5030n (5040n)	5000		4.00	3850	0.25
6030n (6040n)	6000	4.80	4450	0.25	

## TOPRISE-11 Thin Type Ventilator (Open Model)

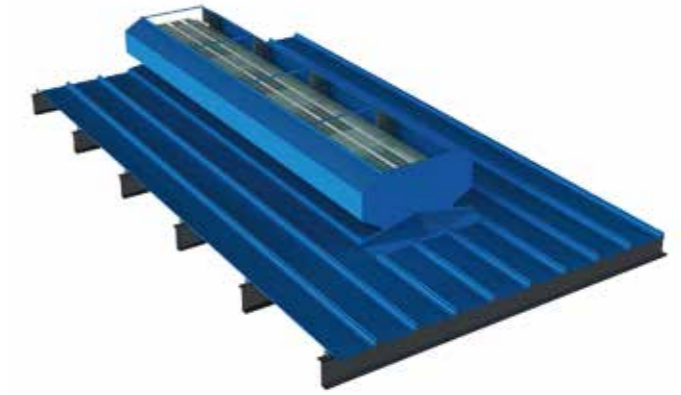
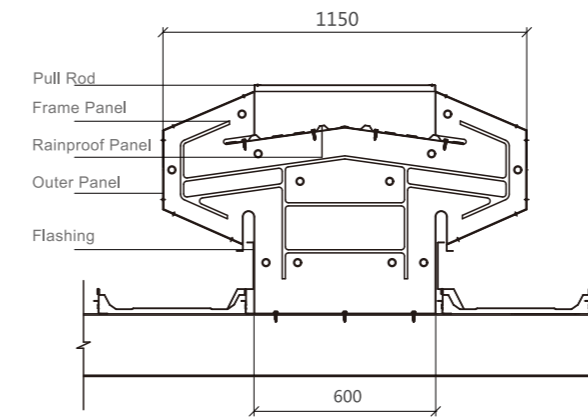
The height of thin type ventilator is lower. The frame is pressed by the profiles and combined by modular units. It is convenient to realize standardized production and installation. Its weight is lighter and the roof load is smaller. It provides superior wind load resistance. This type of ventilator can be installed on slope and ridge. It is suitable for large scaled throat.



	Code	Throat Width (mm)	Throat Length (mm)	Roof Hole(mm)	Exhaust Area per Meter (㎡)	Height (mm)	Electromotor Power (kw/m)
TOPRISE-11 Thin Type Ventilator (Open Model)	3008n	3000	800xn	Single slope 1500	1.2	600	(No Motor)
	6008n	6000		Single slope 3000	2.4	600	
	9008n	9000		Single slope 4500	3.6	600	
	12008n	12000		Single slope 6000	4.8	600	
	15008n	15000		Single slope 7500	6.0	600	
	18008n	18000		Single slope 9000	7.2	600	

## TOPRISE-M-13 Roof Ventilator (Open Model) [General Molding Square]

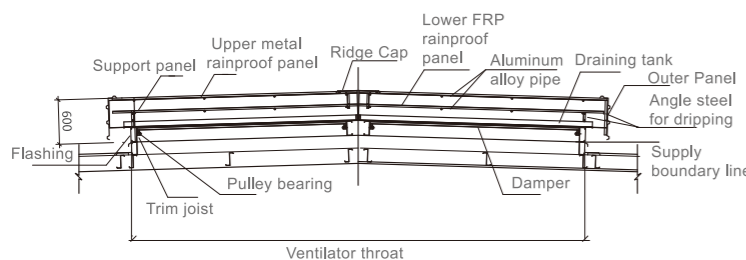
With artistic shape, the structure is simple but has high cost performance and excellent integrity. The installation position could be at your will. Dampers is available. It is suitable for the factories or public architecture having a few strict in wind speed.



	Code	Throat Width (mm)	Throat Length (mm)	Exhaust Area per Meter (㎡)	Height (mm)	Electromotor Power (kw/m)
TOPRISE-M-13 Roof Ventilator (Open Model) [General Molding Square]	0612n ( 0615n )	600	1200×n、1500×n Used for pressed color steel plate or concrete	0.30	600	(No Motor)
	0812n ( 0815n )	800		0.35	600	
	0912n ( 0915n )	900		0.40	600	

## TOPRISE-12 Thin Type Ventilator (Damper Model)

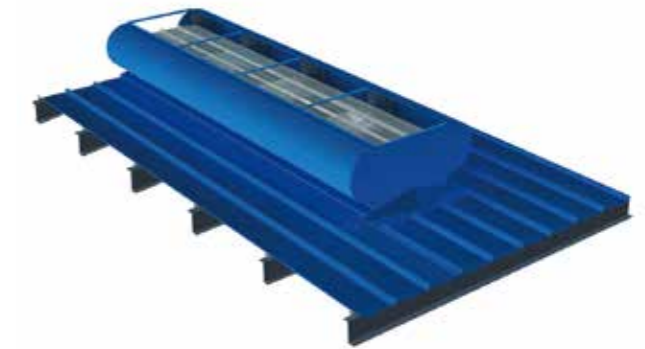
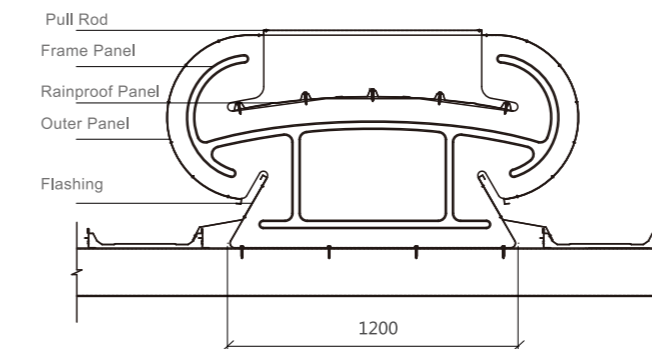
The height of thin type ventilator is lower. The frame is pressed by the profiles and combined by modular units. It is convenient to realize standardized production and installation. Its weight is lighter and the roof load is smaller. It provides superior wind load resistance. This type of ventilator can be installed on slope and ridge. It is suitable for large scaled throat. Damper is available to open and close as per clients requirement.



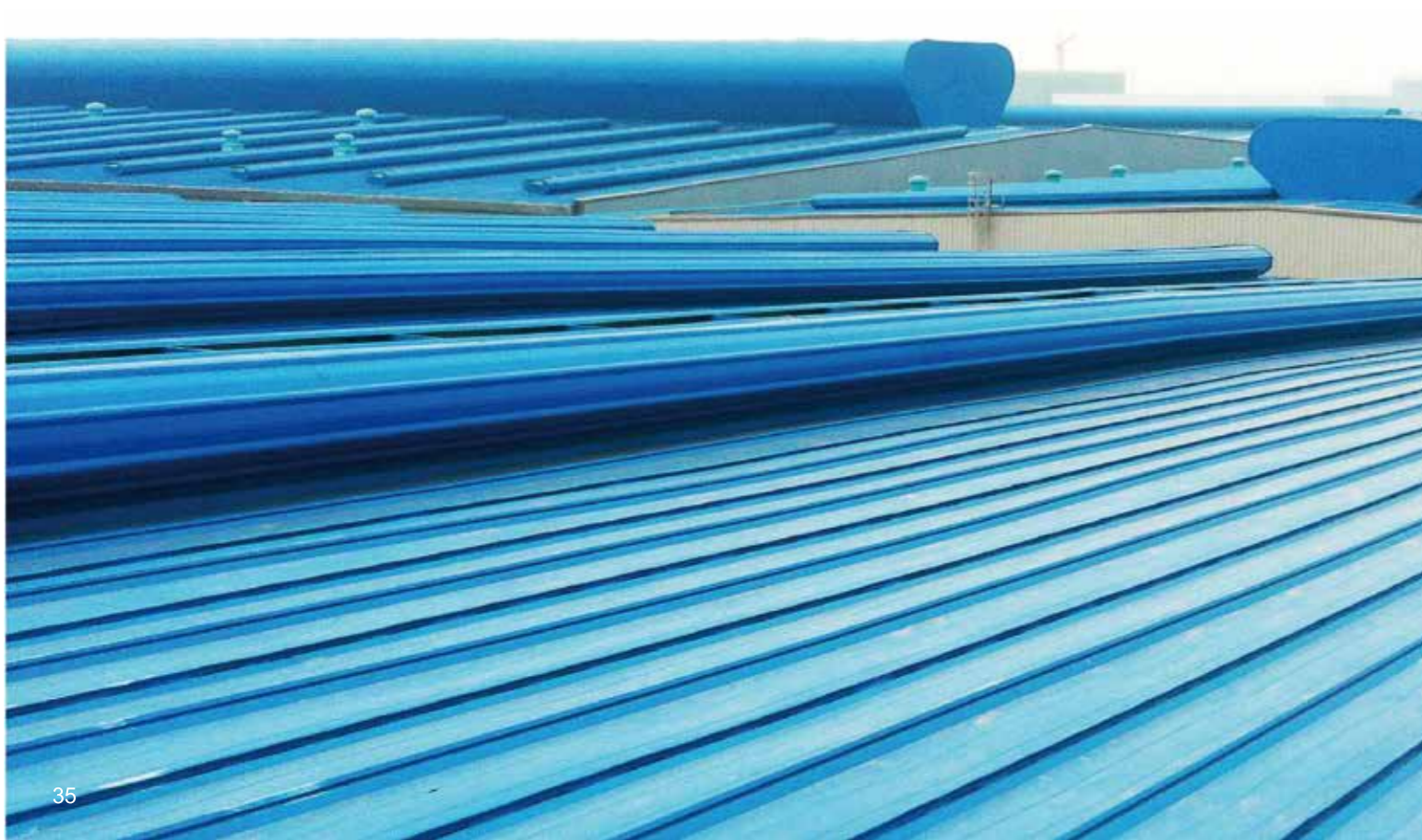
	Code	Throat Width (mm)	Throat Length (mm)	Roof Hole(mm)	Exhaust Area per Meter (㎡)	Height (mm)	Electromotor Power (kw/m)
TOPRISE-12 Thin Type Ventilator (Damper Model)	3008n	3000	800xn	Single slope 1500	1.2	600	24V 50W/ 100m
	6008n	6000		Single slope 3000	2.4	600	
	9008n	9000		Single slope 4500	3.6	600	
	12008n	12000		Single slope 6000	4.8	600	
	15008n	15000		Single slope 7500	6.0	600	
	18008n	18000		Single slope 9000	7.2	600	

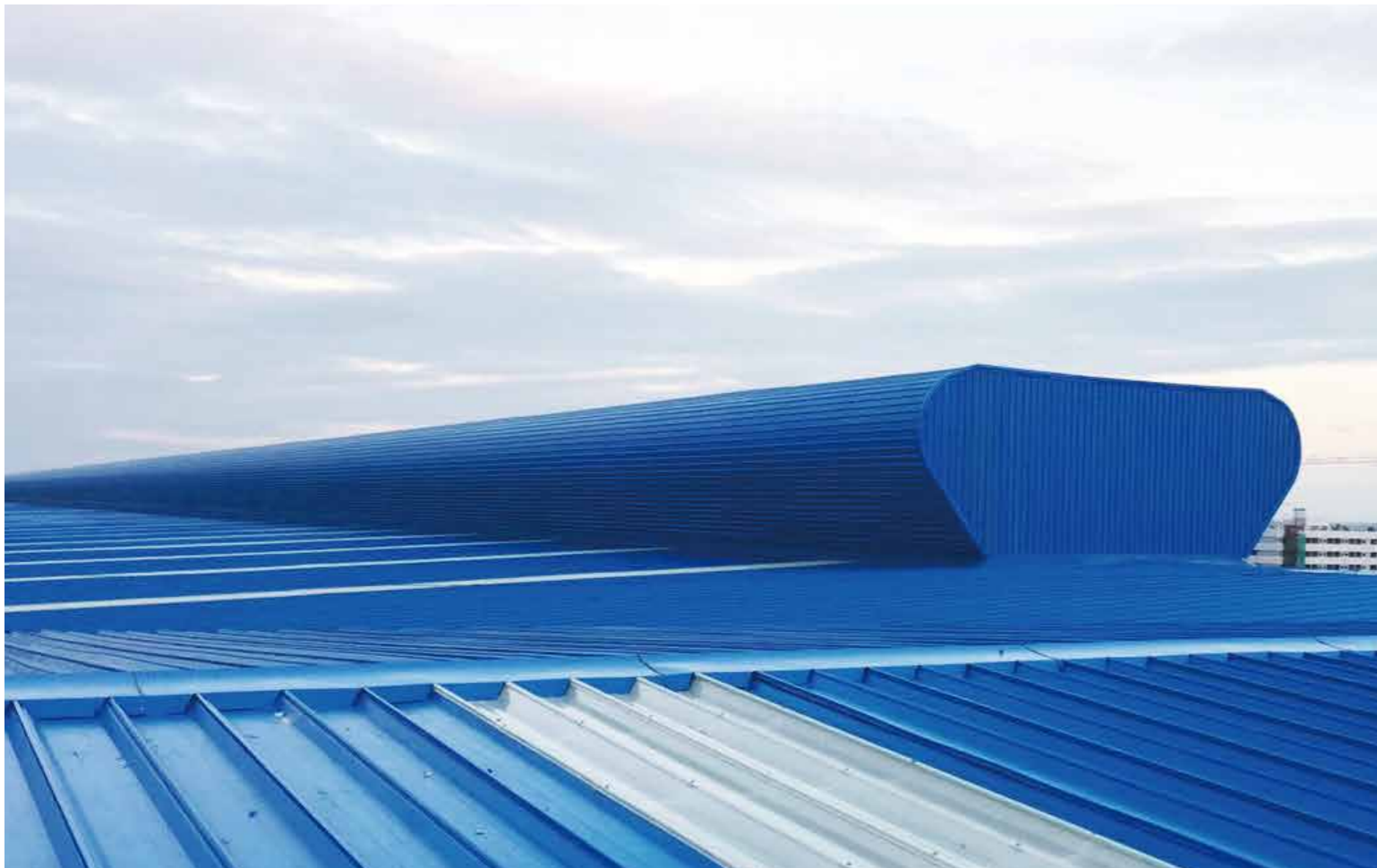
## TOPRISE-M-14 Roof Ventilator (Open Model) [General Molding Circular]

With artistic shape, the structure is simple but has high cost performance and excellent integrity. The installation position could be at your will. Dampers is available. It is suitable for the factories or public architecture having a few strict in wind speed.



	Code	Throat Width (mm)	Throat Length (mm)	Exhaust Area per Meter (㎡)	Height (mm)	Electromotor Power (kw/m)
TOPRISE-M-14 Roof Ventilator (Open Model) [General Molding Circular]	1212n ( 1215n )	1200	1200×n 1500×n Used for pressed color steel plate or concrete	0-50	800	(No Motor)





## GREEN BUILDING

TOPRISE is committed to creating a natural, safe and healthy working and living environment. Let sunlight be everywhere, and let buildings breathe freely.

TOPRISE always adhere to the concept of natural energy saving and advocating a sustainable future for buildings to bring more excellent energy saving products for more buildings.



## OUR CLIENTS

TOPRISE is the leading manufacturer of natural skylight, ventilation and smoke exhausting products. Our clients come from different countries in the world.

